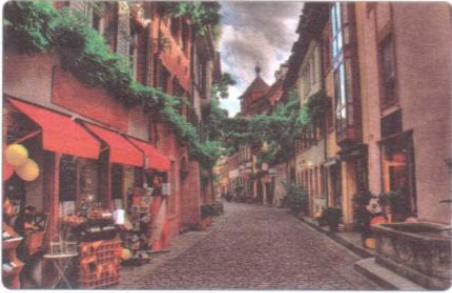


New Elementary 1

Unit 2 Reading

Shops in Different Countries



Greece

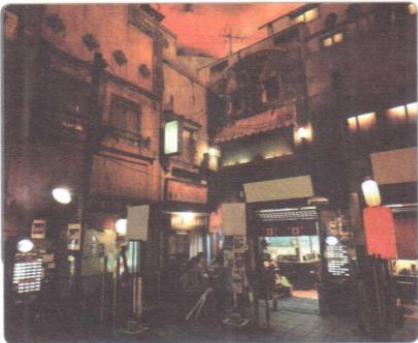
Shops and cafés are open at about 9:00 in the morning. Many people sleep in the afternoon, so small shops are closed from 2:00 to 5:00. Then they are open in the evening until 8:00 or 9:00. Sunday is a holiday, and many people go to church, but some shops are open.

Greece = a country in Europe

café = coffee shop

so = therefore

then = after that; next

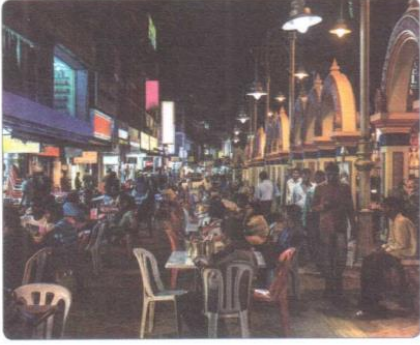


Japan

Shops are open from 10:00 in the morning to 7:00 in the evening. Most shops are closed one day a week, but not always on Sundays. In big towns a few shops are open 24 hours – they are usually near the station.

town = city

shop (British) = store (American)



Egypt

Most shops are open in the morning, afternoon and evening. Many people go shopping in the evening, so shops are open until 9.00 or 10.00. Friday is a holiday and many people go to the mosque, but most shops are open.

most = اکثر، بیشتر



Brazil

Most shops are usually open from 8:00 in the morning to 6:00 in the evening on weekdays and from 8:00 to 1:00 on Saturdays; they are closed on Sundays. With the change of working and living habits in the past years, a few of them stay open until 9:00 in the evening or even later. The shops in places like shopping malls, for example, have different working hours. Also, some supermarkets are open 24 hours.

change (n.) = تغییر، دگرگونی

habit = what we usually do = عادت